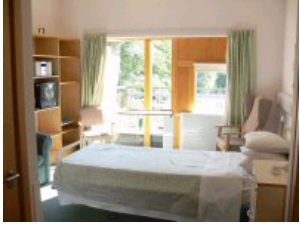


Palliative Care



Palliative care is the active, total care of patients whose illness no longer responds to curative treatment. It focuses on the quality and dignity of life and integrates the physical, psychological, spiritual and social aspects of care. Palliative care needs a special approach that combines all types of professionals, who all work together to provide the best combination of services to care for the needs of each patient as an individual, and the patient's family.

Palliative care affirms life and regards dying as a normal process, gives relief from pain, and supports patients in every possible way, by helping them to live life as fully as possible, however long they may have left to live. Our aim is to maintain dignity, and to support families and carers during and after the illness.

©2012 St Leonards

Built on [Cubik](#)

St Leonard's Hospice is a company limited by guarantee registered in England and Wales under number 1451533. Registered as a charity under number 509294. Registered office: 185 Tadcaster Road, York YO24 1GL